

Main Office
193 Rocky Point Landing Road
Rocky Point, NY 11778
Phone: (631) 821-5948
Fax: (631) 821-8743

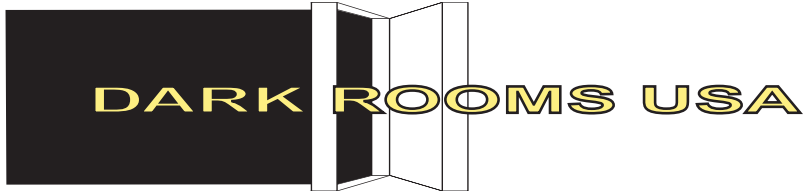
DESIGNERS, SUPPLIERS & INSTALLERS OF COMPLETE PHOTOGRAPHIC LABORATORIES

SIMMONS COLLEGE

DESIGN PRESENTATION DOCUMENTS FOR PHOTOGRAPHIC STUDIO

PREPARED FOR:

**FHCM-S ARCHITECTS
46 Waltham Street
Boston, MA 02118
PHONE: 617/695-9300
FAX: 617/695-9301**



PHOTOGRAPHIC DARKROOMS
 Designers Suppliers Installers
 193 Rocky Point Landing Rd.
 Rocky Point, NY 11778
 Phone:631/821-5948 Fax:516/908-7767

PROPOSAL EQUIPMENT SCHEDULE
SIMMONS COLLEGE – PHOTO SUITE

Project Number: DI0476
Start Date: 6/30/05
Drawing Number: SU-01
Rev. Number: 1
Rev. Date: 07/29/05

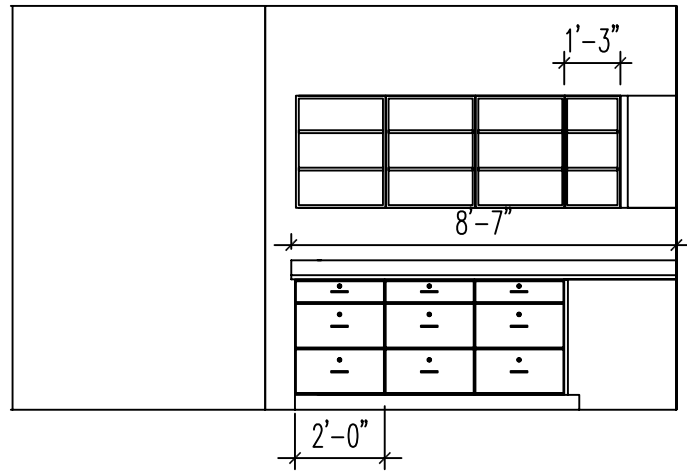
Elev. & Room #	Qty	Model No.	Description
001 423 - Studio/ Classroom			
	3	WO243013	24" OPEN WALLCABINET, TWO ADJUSTIBLE SHELVES
	1	W0153013	15" OPEN WALLCABINET, TWO ADJUSTIBLE SHELVES
	103	SCT30	30" DEEP COUNTERTOP, 4" BACKSPLASH
	3	FD243624	24" DRAWER CABINET, 3 DRAWER
	9	LKS1	LOCK SET, KEYED PER END USER REQUEST
002 423 - Studio/ Classroom			
	1	W0153013	15" OPEN WALLCABINET, TWO ADJUSTIBLE SHELVES
	7	W243013	24" WALLCABINET, SINGLE DOOR, TWO ADJUSTIBLE SHELVES
	1	W0153013	15" OPEN WALLCABINET, TWO ADJUSTIBLE SHELVES
	198	STD30	30" COUNTERTOP, W/ 4" BACKSPLASH
	7	BL183624	18" DRAWER CABINET w/ TWO LOCKER CUBICLES
	16	LKS1	LOCK SET, KEYED PER END USER REQUEST
003 423 - Studio/ Classroom			
	1	W0153013	15" OPEN WALLCABINET, TWO ADJUSTIBLE SHELVES
	2	W243013	24" WALLCABINET, SINGLE DOOR, TWO ADJUSTIBLE SHELVES
	1	W0153013	15" OPEN WALLCABINET, TWO ADJUSTIBLE SHELVES
	67	STD30	30" COUNTERTOP, W/ 4" BACHSPLASH, ADA ACCESS HEIGHT
	2	BO153424	15" OPEN BASECABINET, ADA ACCESS HEIGHT

Elev. & Room #	Qty	Model No.	Description
004 423 - Studio/ Classroom			
	1	SC638424	CUBICLE CABINET, 9 @ 20" WIDE , 84" TALL WITH FIXED-IN-PLACE DIVIDERS
005 423 - Studio/ Classroom			
	1	MT4872SS	48"W x 72"L TABLE, PHENOLIC RESIN TOP, STAINLESS STEEL BASE, BOTTOM PHENOLIC RESIN SHELF AND HEAVY DUTY WHEELS W/ LOCKS
001 423B – Film Developing			
	1	DI24SBSS	24" STAINLESS STEEL SQUEEGEE BOARD
	1	DI24PBSS	24" STAINLESS STEEL PEG BOARD
	1	DI30PWSSH	STAINLESS STEEL ROUND PRINT WASHER W/ HEAVY DUTY STAINLESS STEEL ADA ACCESSIBLE STAND.
	2	SSCS18DTM	51" STAINLESS STEEL CHEMICAL SHELF W/ VENT CUTOUT
	1	DI1745SSHV	48" STAINLESS STEEL (Type 316) FILM PROCESSING ASSEMBLY, INTEGRAL DUMP TROUGH AND HEAVY DUTY STAINLESS STEEL ADA ACCESSIBLE STAND.
	2	SSCS18DTM	120" STAINLESS STEEL CHEMICAL SHELF W/ VENT CUTOUT
	5	GL300	PROCESS COUNT DOWN TIMER
	1	DI17105SSV	120" STAINLESS STEEL (Type 316) FILM PROCESSING ASSEMBLY, INTEGRAL DUMP TROUGH AND HEAVY DUTY STAINLESS STEEL STAND w/ COMPLETE LOWER SHELF.
	2	S19-430D	SAFETY EYE/FACE WASH ASSEMBLY. HAND-HELD, STAINLESS STEEL HOSE.
	1	DIMET101A	UNDER SINK, SILVER RECOVERY SYSTEM FOR SPENT FIXERS.
	2	DINT5	UNDER SINK, ACID NEUTRALIZATION CARTRIDGE.
002 423B – Film Developing			
	2	ILSD	"DARKROOM IN USE" SIGN
	2	DI1212	100% LIGHT BLOCK LOUVER
	2	DI36LTK	LIGHT BLOCK SEAL KIT FOR 36" SWING DOOR
003 423B – Film Developing			
	36	STD25	25" COUNTERTOP, W/ 4" BACHSPLASH
	2	AD36	APRON DRAWER ASSEMBLY
	36	STD25	25" COUNTERTOP, W/ 4" BACHSPLASH, ADA ACCESS HEIGHT
	1	LP3425	LEG PANEL

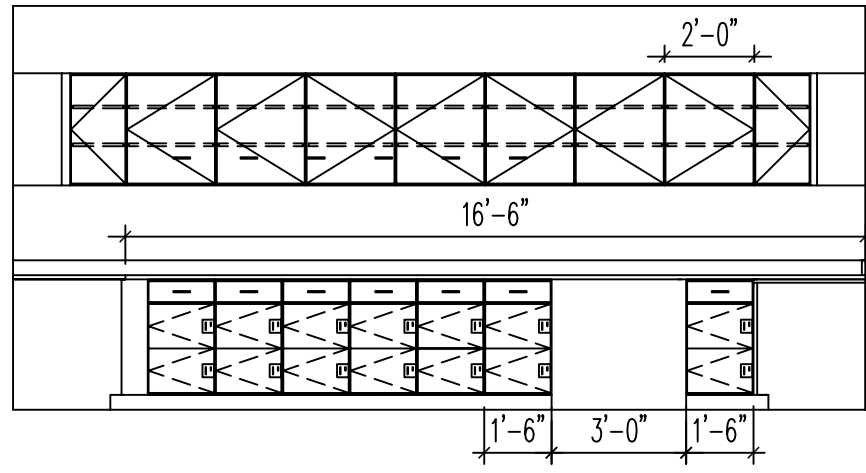
Elev. & Room #	Qty	Model No.	Description
004 423B – Film Developing			
	6	ASA3612	36" ADJUSTIBLE SHELVING UNIT, HEAVY DUTY STEEL BRACKETS AND STANDARDS
005 423B – Film Developing			
	1	W0153013	15" OPEN WALLCABINET, TWO ADJUSTIBLE SHELVES
	6	WO363013	36" OPEN WALLCABINET, TWO ADJUSTIBLE SHELVES
	1	W0153013	15" OPEN WALLCABINET, TWO ADJUSTIBLE SHELVES
	246	STD30	30" COUNTERTOP, W/ 4" BACKSPLASH
	1	BO153424	15" OPEN BASECABINET, TWO ADJUSTIBLE SHELVES
	1	BPDC365	36" BASE CABINET, VIEWLIGHT DRAWER, 8 PRINT DRYING FIBERGLASS SCREENS W/ ALUMINUM FRAMES
	1	PT1824	18" X 24" BUILTIN VIEW LIGHT
	2	B1836242D	18" BASE CABINET, ONE DRAWER, TWO DOORS
	6	LKS1	LOCK SET, KEYED PER END USER REQUEST
	1	BPDC365	36" BASE CABINET, VIEWLIGHT DRAWER, 8 PRINT DRYING FIBERGLASS SCREENS W/ ALUMINUM FRAMES
	1	PT1824	18" X 24" BUILTIN VIEW LIGHT
	2	B1836242D	18" BASE CABINET, ONE DRAWER, TWO DOORS
	6	LKS1	LOCK SET, KEYED PER END USER REQUEST
	1	BPDC365	36" BASE CABINET, VIEWLIGHT DRAWER, 8 PRINT DRYING FIBERGLASS SCREENS W/ ALUMINUM FRAMES
	1	PT1824	18" X 24" BUILTIN VIEW LIGHT
	2	B1836242D	18" BASE CABINET, ONE DRAWER, TWO DOORS
	6	LKS1	LOCK SET, KEYED PER END USER REQUEST
	1	BO153424	15" OPEN BASECABINET, TWO ADJUSTIBLE SHELVES
	1	RC2100	COUNTERTOP DRYER
	2	SSRFD2036	STAINLESS STEEL ROLL FILM DRYING CABINET
001 423D – DARKROOM			
	4	LP3048	LIGHT BAFFLE W/ ALUMINUM CHANNEL MOUNTING KIT
	240	STD30	30" COUNTERTOP, W/ 4" BACKSPLASH
	5	B4836296D	48" BASE CABINET, 36" HEIGHT W/ THREE COMPARTMENT SHELF AND SIX DOORS.
	30	LKS1	LOCK SET, KEYED PER END USER REQUEST

Elev. & Room #	Qty	Model No.	Description
002 423D – DARKROOM			
	1	SSASA1860	18" X 60" STAINLESS STEEL SHELF ASSEMBLY W/ 5 SHELVES
	1	CT20628	SAFETY CONTAINMENT, SPILL TRAY
003 423D – DARKROOM			
	2	LP3048	LIGHT BAFFLE W/ ALUMINUM CHANNEL MOUNTING KIT
	144	STD30	30" COUNTERTOP, W/ 4" BACKSPLASH
	3	B4836296D	48" BASE CABINET, 36" HEIGHT W/ THREE COMPARTMENT SHELF AND SIX DOORS.
	18	LKS1	LOCK SET, KEYED PER END USER REQUEST
004 423D – DARKROOM			
	2	DI24SBSS	24" STAINLESS STEEL SQUEEGEE BOARD
	1	DI36PWSS	STAINLESS STEEL ROUND PRINT WASHER W/ HEAVY DUTY STAINLESS STEEL STAND.
	1	DI3475SSDS	STAINLESS STEEL WALK AROUND SINK ASSEMBLY W/ INTEGRAL DUMP TROUGH AND HEAVY DUTY STAINLESS STEEL STAND w/ COMPLETE LOWER SHELF.
	1	DI3475SLV	FUME EXHAUST VENT SYSTEM W/OVERHEAD CHEMICAL SHELF.
	1	S19-430D	SAFETY EYE/FACE WASH ASSEMBLY. HAND-HELD, STAINLESS STEEL HOSE.
	1	DIMET101A	UNDER SINK, SILVER RECOVERY SYSTEM FOR SPENT FIXERS.
	1	DINT5	UNDER SINK, ACID NEUTRALIZATION CARTRIDGE.
005 423D – DARKROOM			
	1	MT3048SS	30"W x 48"L TABLE, PHENOLIC RESIN TOP, STAINLESS STEEL BASE W/ ONE FULL DRAWER, BOTTOM PHENOLIC RESIN SHELF AND HEAVY DUTY WHEELS W/ LOCKS
001 423C – ADVANCED DARKROOM			
	3	LP3048	LIGHT BAFFLE W/ ALUMINUM CHANNEL MOUNTING KIT
	192	STD30	30" COUNTERTOP, W/ 4" BACKSPLASH
	4	B4836296D	48" BASE CABINET, 36" HEIGHT W/ THREE COMPARTMENT SHELF AND SIX DOORS.
	24	LKS1	LOCK SET, KEYED PER END USER REQUEST

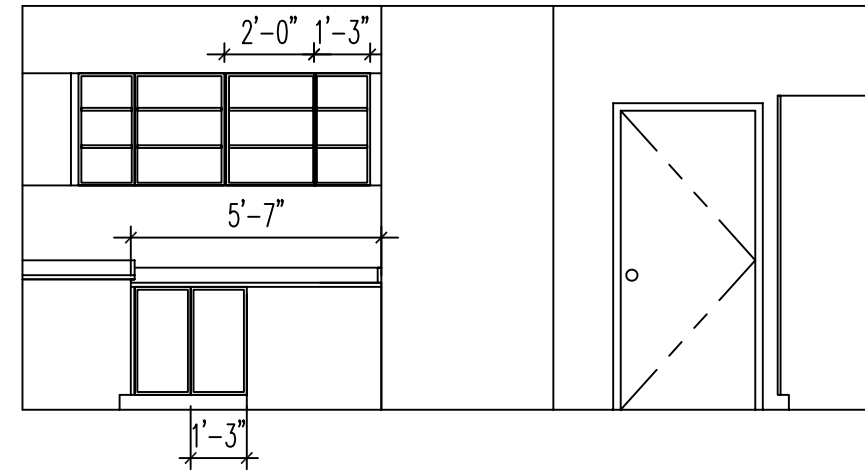
Elev. & Room #	Qty	Model No.	Description
002 423C – ADVANCED DARKROOM			
	2	SSCS18DTM	120" STAINLESS STEEL CHEMICAL SHELF W/ VENT CUTOUT
	2	GL300	PROCESS COUNT DOWN TIMER
	1	DI24105SSV	120" STAINLESS STEEL (Type 316) PRINT PROCESSING ASSEMBLY, INTEGRAL DUMP TROUGH AND HEAVY DUTY STAINLESS STEEL STAND w/ COMPLETE LOWER SHELF.
	1	S19-430D	SAFETY EYE/FACE WASH ASSEMBLY. HAND-HELD, STAINLESS STEEL HOSE.
	1	DIMET101A	UNDER SINK, SILVER RECOVERY SYSTEM FOR SPENT FIXERS.
	1	DINT5	UNDER SINK, ACID NEUTRALIZATION CARTRIDGE.
001 423A – ALTERNATE PROCESS			
	2	SSCS18DTM	120" STAINLESS STEEL CHEMICAL SHELF W/ VENT CUTOUT
	2	GL300	PROCESS COUNT DOWN TIMER
	1	DI24105SSV	120" STAINLESS STEEL (Type 316) PRINT PROCESSING ASSEMBLY, INTEGRAL DUMP TROUGH AND HEAVY DUTY STAINLESS STEEL STAND w/ COMPLETE LOWER SHELF.
	1	S19-430D	SAFETY EYE/FACE WASH ASSEMBLY. HAND-HELD, STAINLESS STEEL HOSE.
	1	DIMET101A	UNDER SINK, SILVER RECOVERY SYSTEM FOR SPENT FIXERS.
	1	DINT5	UNDER SINK, ACID NEUTRALIZATION CARTRIDGE.
002 423A – ALTERNATE PROCESS			
	80	STD25	25" COUNTERTOP, W/ 4" BACKSPLASH
	2	BO273624	27" OPEN BASECABINET, TWO ADJUSTIBLE SHELVES
	1	TS248424	24" TALL STORAGE CABINET
003 423A – ALTERNATE PROCESS			
	1	MT3048SS	30"W x 48"L TABLE, PHENOLIC RESIN TOP, STAINLESS STEEL BASE W/ ONE FULL DRAWER, BOTTOM PHENOLIC RESIN SHELF AND HEAVY DUTY WHEELS W/ LOCKS
	1	ILSD	"DARKROOM IN USE" SIGN
	1	DI1212	100% LIGHT BLOCK LOUVER
	1	DI36LTK	LIGHT BLOCK SEAL KIT FOR 36" SWING DOOR
	1	DI18LTK	LIGHT BLOCK SEAL KIT FOR 18" SWING DOOR



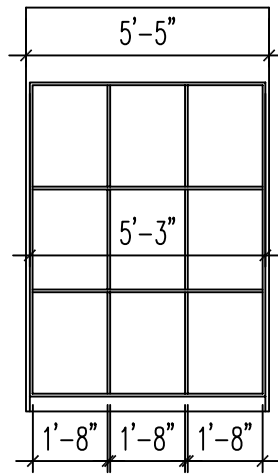
ELEVATION # 1 - STUDIO/CLASS 423
SCALE - 1/4" = 1'-0"



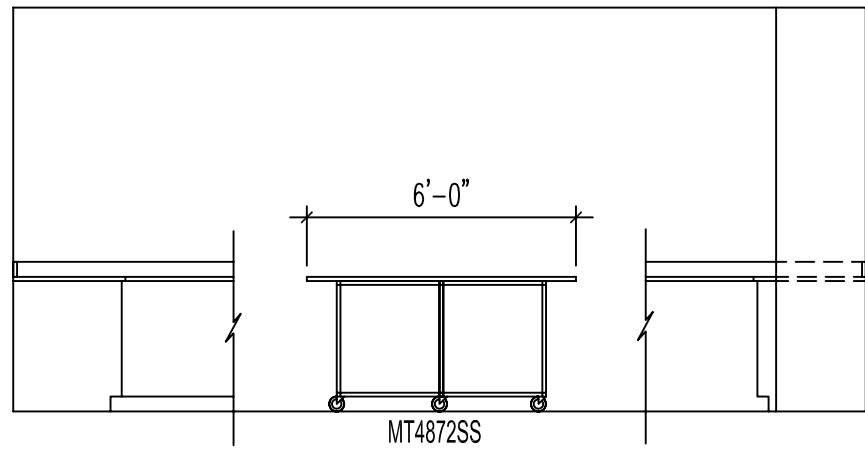
ELEVATION # 2 - STUDIO/CLASS 423
SCALE - 1/4" = 1'-0"



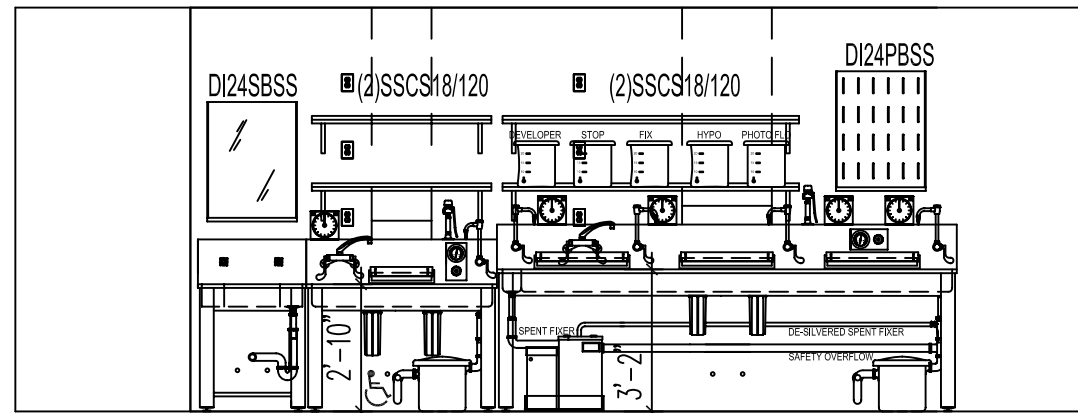
ELEVATION # 3 - STUDIO/CLASS 423
SCALE - 1/4" = 1'-0"



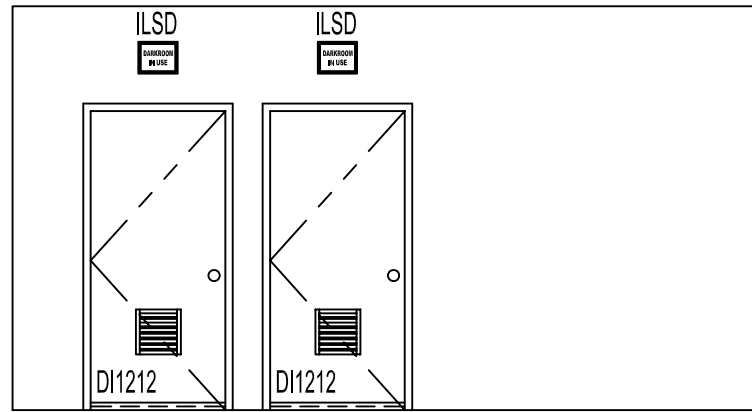
ELEVATION # 4 - STUDIO/CLASS 423
SCALE - 1/4" = 1'-0"



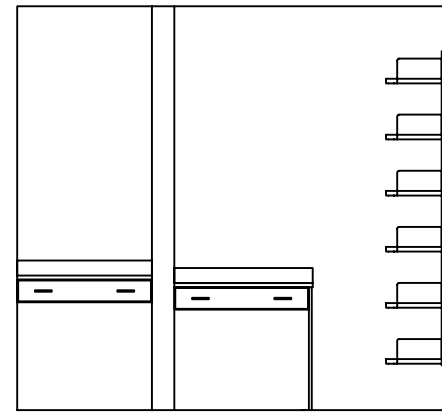
ELEVATION # 5 - STUDIO/CLASS 423
SCALE - 1/4" = 1'-0"



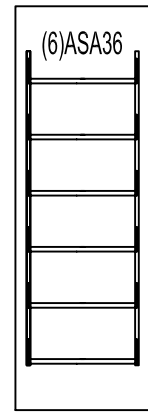
ELEVATION # 1 - FILM DEVELOPING 423B
SCALE - 1/4" = 1'-0"



ELEVATION # 2 - FILM DEVELOPING 423B
SCALE - 1/4" = 1'-0"



ELEVATION # 3 - FILM DEVELOPING 423B
SCALE - 1/4" = 1'-0"



ELEVATION # 4 - FILM DEVELOPING 423B
SCALE - 1/4" = 1'-0"

DARK ROOMS USA
 193 Rocky Point Landing Road • Rocky Point • NY 11778
 Phone: 631/821-5948
 Fax: 631/821-8743
 WWW.DARKROOMSUSA.COM

APPROVED BY

DATE	REVISIONS		
DRAWN BY	#	DATE	BY
06/29/05	1	072505	TA

CONTRACTOR

ARCHITECT
 FHCM * S Architects

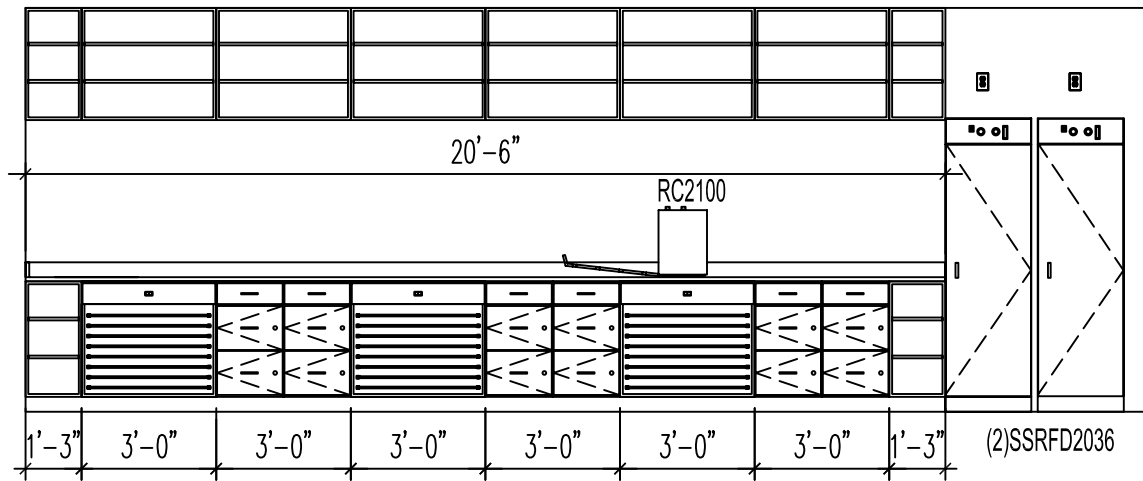
PROJECT
 SIMMONS COLLEGE
 PHOTOGRAPHIC DARKROOM SUITE

TITLE
 DESIGN DEVELOPMENT - REVISED ELEVATIONS

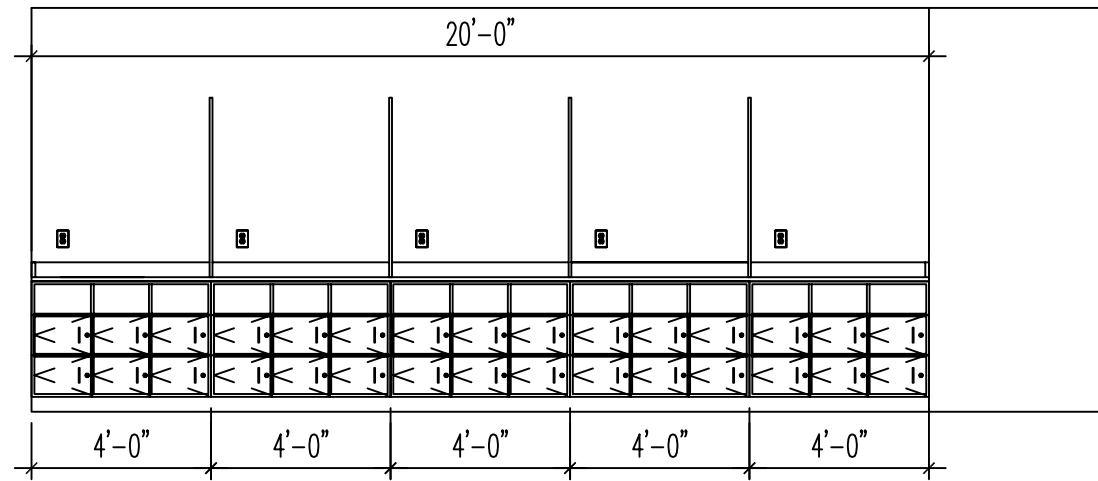
PROJECT #
 DI680

DRAWING #
 PR-01

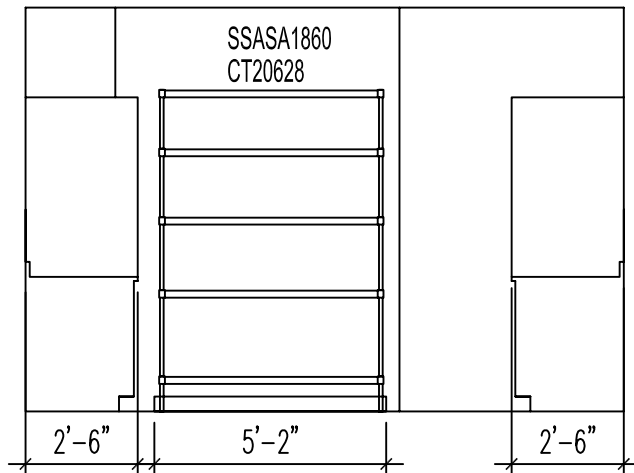
SHEET 2 OF 4



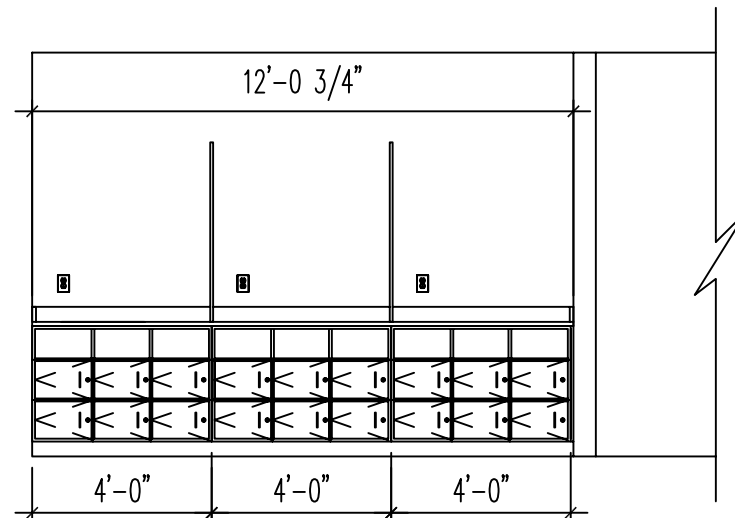
ELEVATION # 5 - FILM DEVELOPING 423B
SCALE - 1/4" = 1'-0"



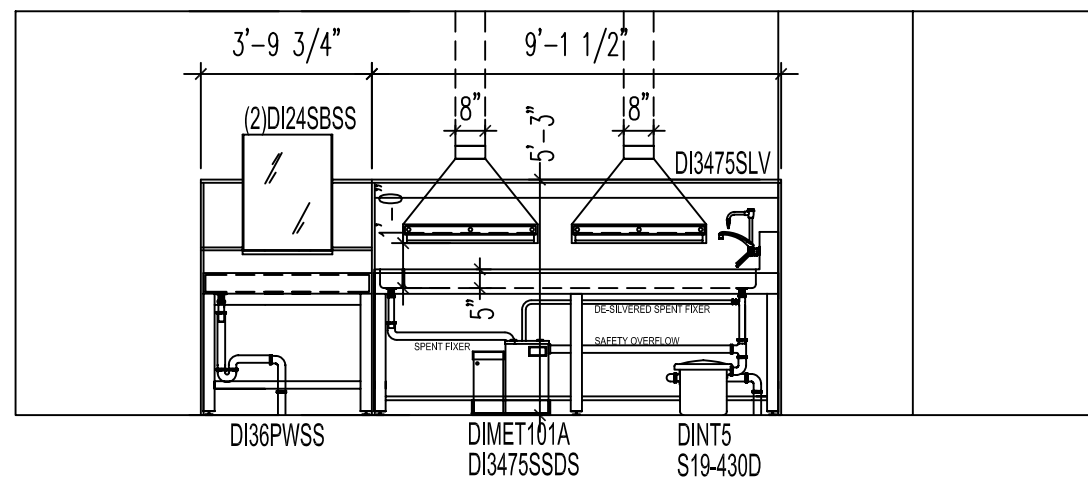
ELEVATION # 1 - DARKROOM 423D
SCALE - 1/4" = 1'-0"



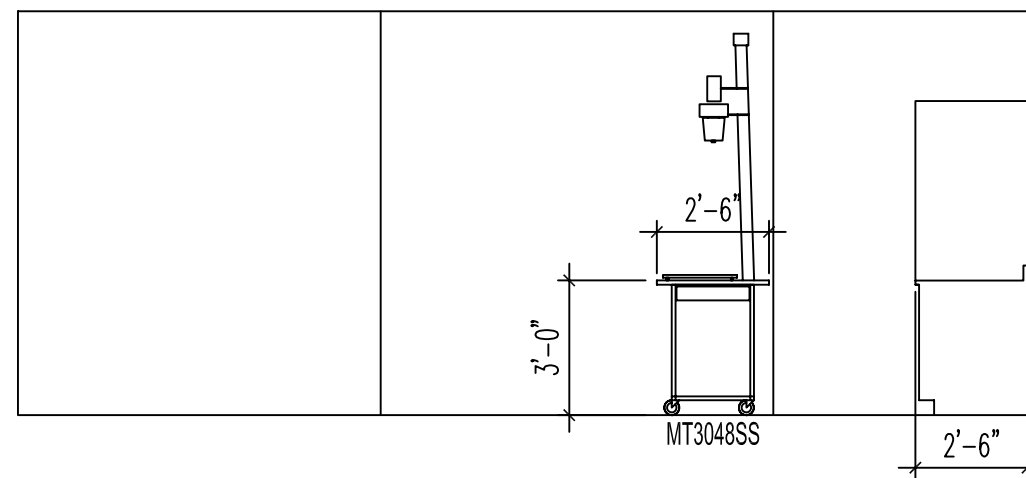
ELEVATION # 2 - DARKROOM 423D
SCALE - 1/4" = 1'-0"



ELEVATION # 3 - DARKROOM 423D
SCALE - 1/4" = 1'-0"

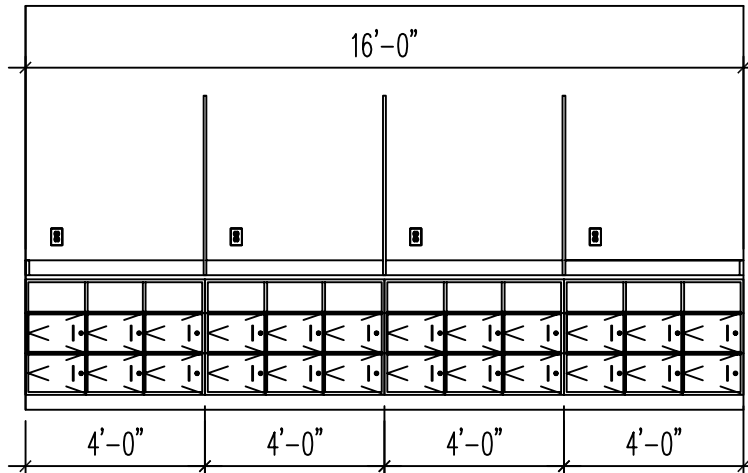


ELEVATION # 4 - DARKROOM 423D
SCALE - 1/4" = 1'-0"

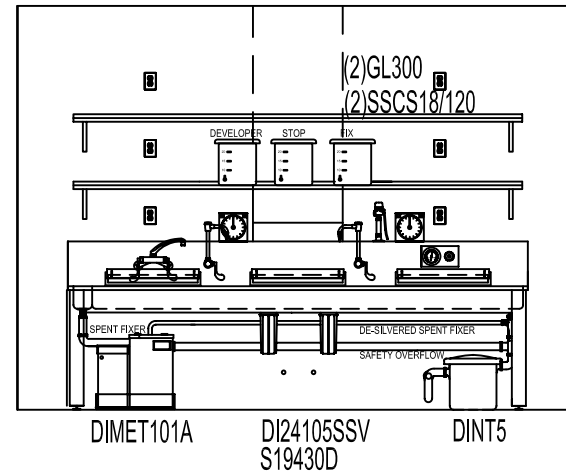


ELEVATION # 5 - DARKROOM 423D
SCALE - 1/4" = 1'-0"

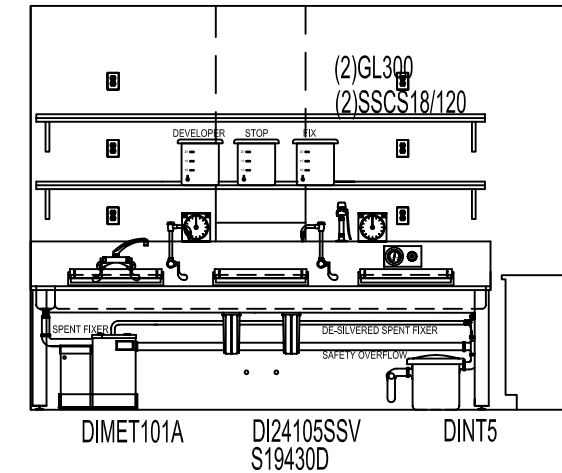
<p>Photographic Darkrooms • Designers • Suppliers • Installers</p> <p>Phone: 631/821-5948 Fax: 631/821-8743 WWW.DARKROOMSUSA.COM</p> <p>193 Rocky Point Landing Road • Rocky Point • NY 11778 CONTRACTOR</p>	APPROVED BY	
	DATE	REVISIONS
	DRAWN BY	# DATE BY
	SCALE	1 072505 TA
ARCHITECT FHCM * S Architects		PROJECT # DI680
PROJECT SIMMONS COLLEGE PHOTOGRAPHIC DARKROOM SUITE		DRAWING # PR-01
TITLE DESIGN DEVELOPMENT - REVISED ELEVATIONS		SHEET 3 OF 4



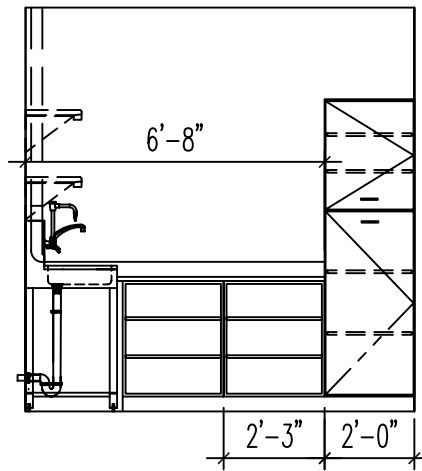
ELEVATION # 1 - ADVANCED DARKROOM 423C
SCALE - 1/4" = 1'-0"



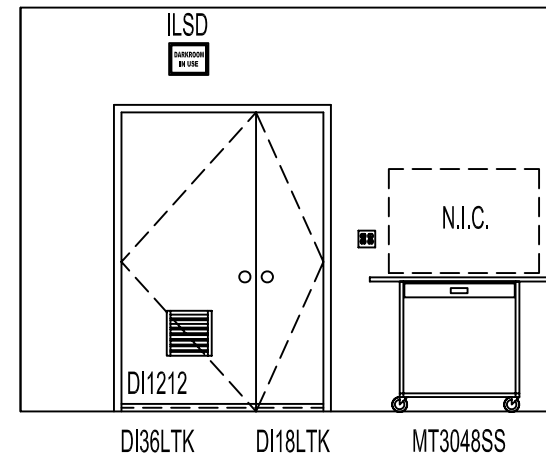
ELEVATION # 2 - ADVANCED DARKROOM 423C
SCALE - 1/4" = 1'-0"




ELEVATION # 1 - ALTERNATE PROCESS 423A
SCALE - 1/4" = 1'-0"



ELEVATION # 2 - ALTERNATE PROCESS 423A
SCALE - 1/4" = 1'-0"



ELEVATION # 3 - ALTERNATE PROCESS 423A
SCALE - 1/4" = 1'-0"

 <p>Photographic Darkrooms • Designers • Suppliers • Installers</p> <p>Phone: 631/821-5948 Fax: 631/821-8743 WWW.DARKROOMSUSA.COM</p> <p>193 Rocky Point Landing Road • Rocky Point • NY 11778</p>	APPROVED BY	
	DATE	REVISIONS
	DRAWN BY	# DATE BY
	SCALE	1 052505 TA
CONTRACTOR		1/2" = 1'-0"
ARCHITECT		PROJECT #
FHCM * S Architects		DI680
PROJECT		DRAWING #
SIMMONS COLLEGE		PR-01
TITLE		
DESIGN DEVELOPMENT - REVISED ELEVATIONS		SHEET 4 OF 4