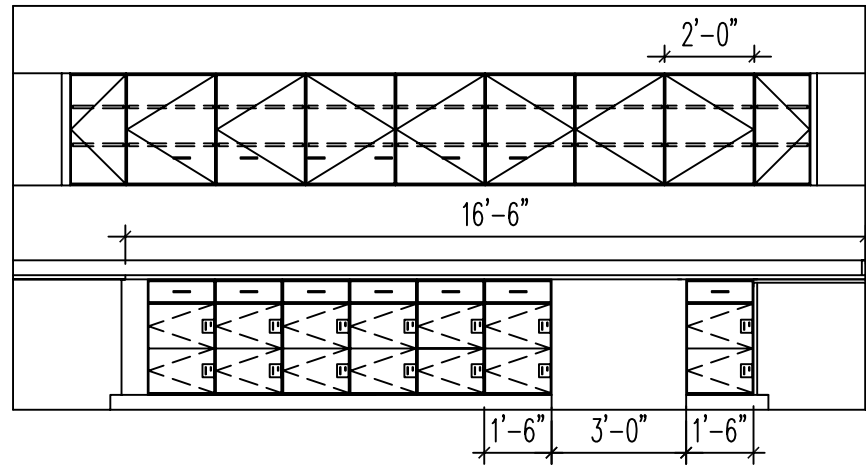
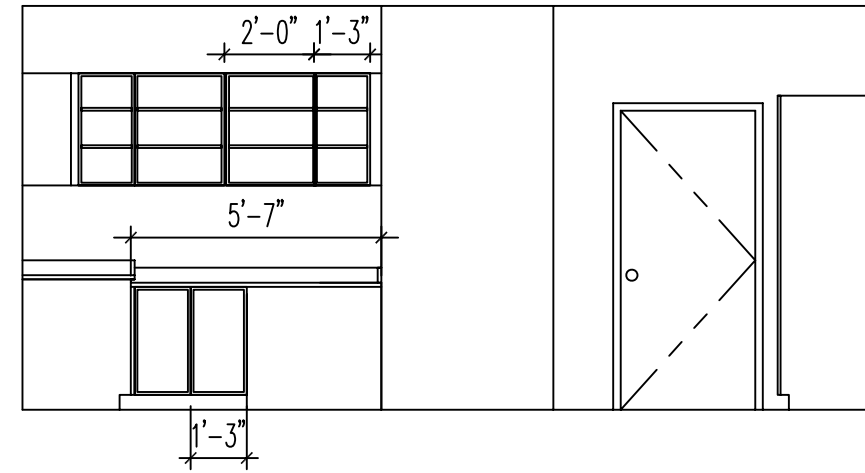


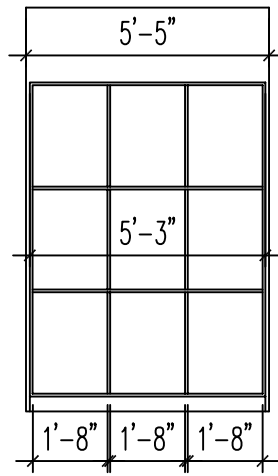
ELEVATION # 1 - STUDIO/CLASS 423
SCALE - 1/4" = 1'-0"



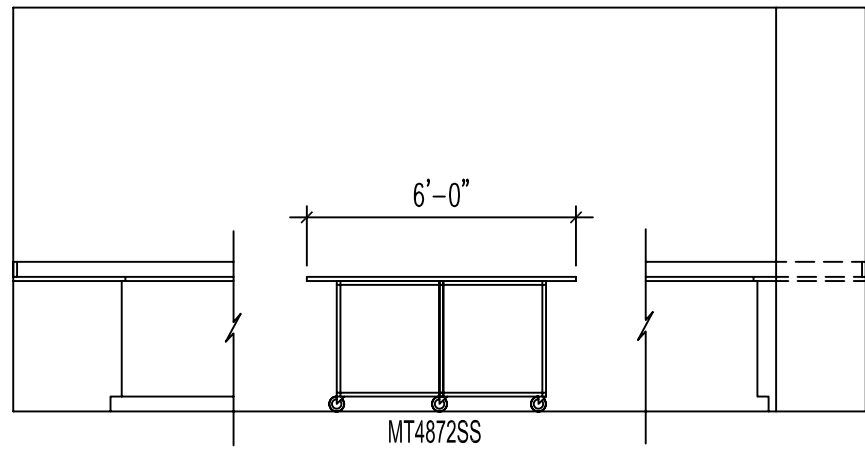
ELEVATION # 2 - STUDIO/CLASS 423
SCALE - 1/4" = 1'-0"



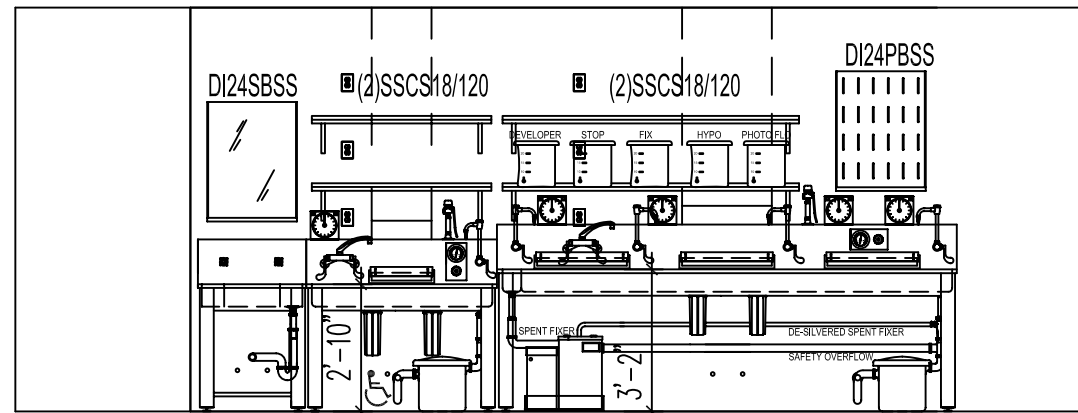
ELEVATION # 3 - STUDIO/CLASS 423
SCALE - 1/4" = 1'-0"



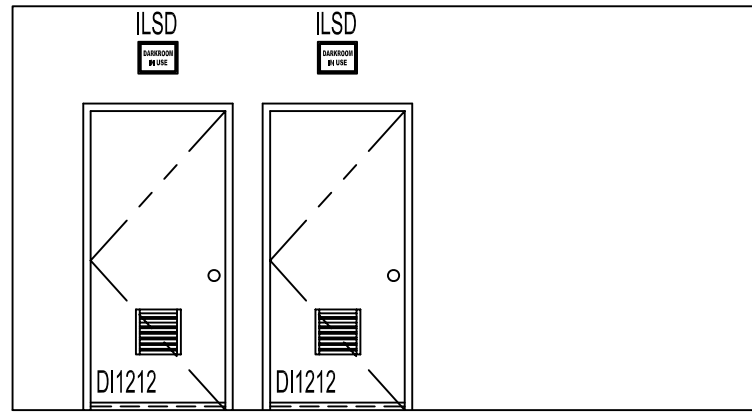
ELEVATION # 4 - STUDIO/CLASS 423
SCALE - 1/4" = 1'-0"



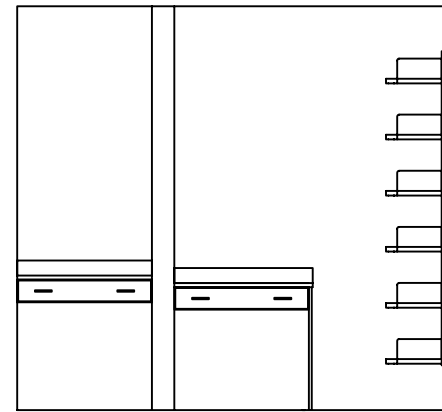
ELEVATION # 5 - STUDIO/CLASS 423
SCALE - 1/4" = 1'-0"



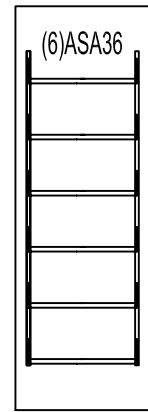
ELEVATION # 1 - FILM DEVELOPING 423B
SCALE - 1/4" = 1'-0"



ELEVATION # 2 - FILM DEVELOPING 423B
SCALE - 1/4" = 1'-0"



ELEVATION # 3 - FILM DEVELOPING 423B
SCALE - 1/4" = 1'-0"



ELEVATION # 4 - FILM DEVELOPING 423B
SCALE - 1/4" = 1'-0"

<p>Photographic Darkrooms • Designers • Suppliers • Installers</p> <p>193 Rocky Point Landing Road • Rocky Point • NY 11778</p>	APPROVED BY	REVISIONS			
	DATE	06/29/05	#	DATE	BY
	DRAWN BY	TA	1	072505	TA
	SCALE	1/2" = 1'-0"			
ARCHITECT FHCM * S Architects		PROJECT # DI680			
PROJECT SIMMONS COLLEGE PHOTOGRAPHIC DARKROOM SUITE		DRAWING # PR-01			
TITLE DESIGN DEVELOPMENT - REVISED ELEVATIONS		SHEET 2 OF 4			